



ART

@ Torey J. Sabatini

**Georgia O'Keeffe: Understanding Modern Art and
Focus Through the Use of a Viewfinder**

Objective 1:

Today, we will learn that Georgia O'Keeffe is an artist that contributed to modern art.

-Modern art gives the artist choice as to what to draw or paint or photograph.

-Modern art is expressive and free. Artwork does not have to look exactly like the objects that are being drawn or painted or photographed.



What do you think makes these Georgia O'Keeffe works "modern?"



Petunia

*Remember that modern art gives the artist choice and expression. (The art does not have to look like the object that the artist is drawing/painting/photographing.)

What do you think makes these Georgia O'Keeffe works "modern?"



Sky Above Clouds

*Remember that modern art gives the artist choice and expression. (The art does not have to look like the object that the artist is drawing/painting/photographing.)

What do you think makes these Georgia O'Keeffe works “modern?”



Evening Star

*Remember that modern art gives the artist choice and expression. (The art does not have to look like the object that the artist is drawing/painting/photographing.)



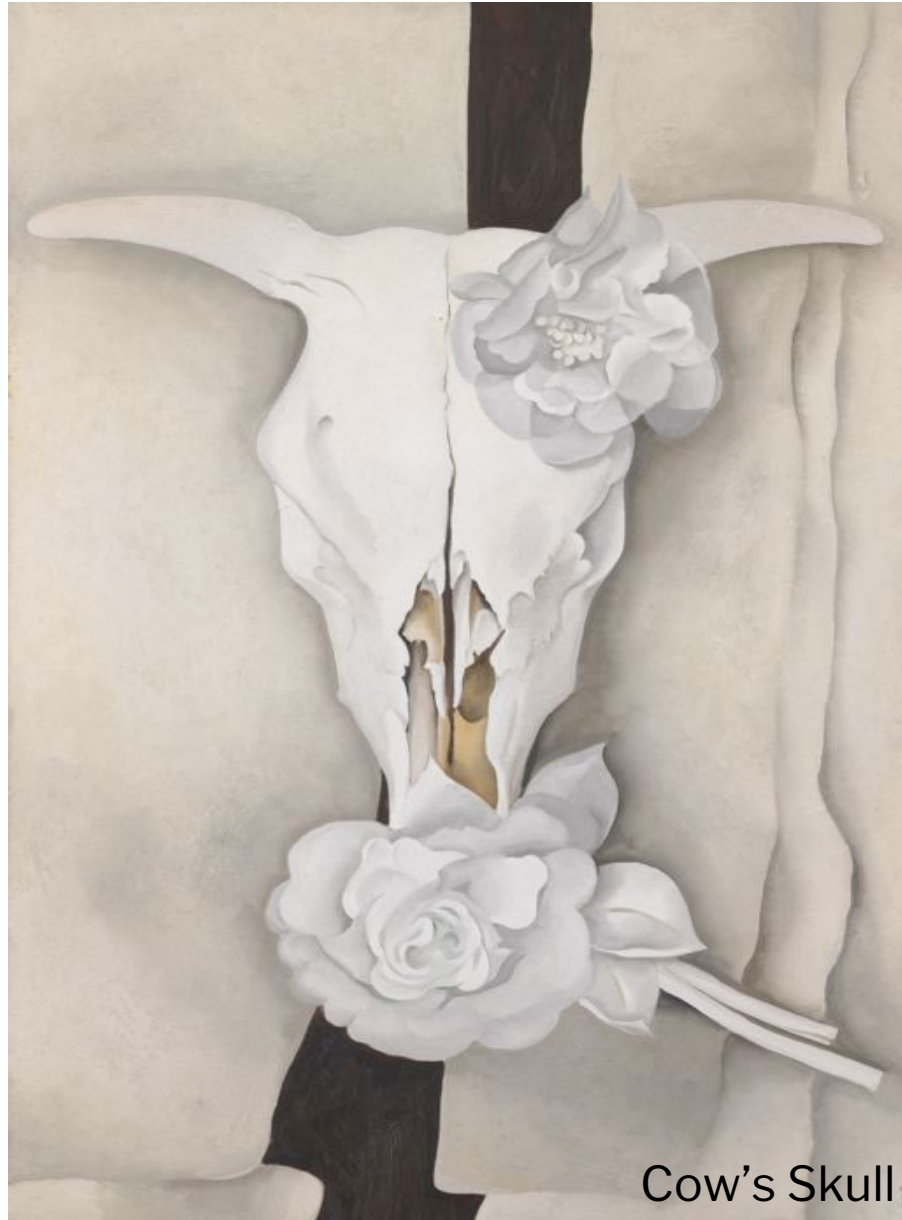
Fun Question: Do you think Georgia O'Keeffe is using a piece of Swiss cheese as a viewfinder here?

Objective 2:

Today, we will also learn that Georgia O'Keeffe often made her artwork as if she was using a viewfinder.

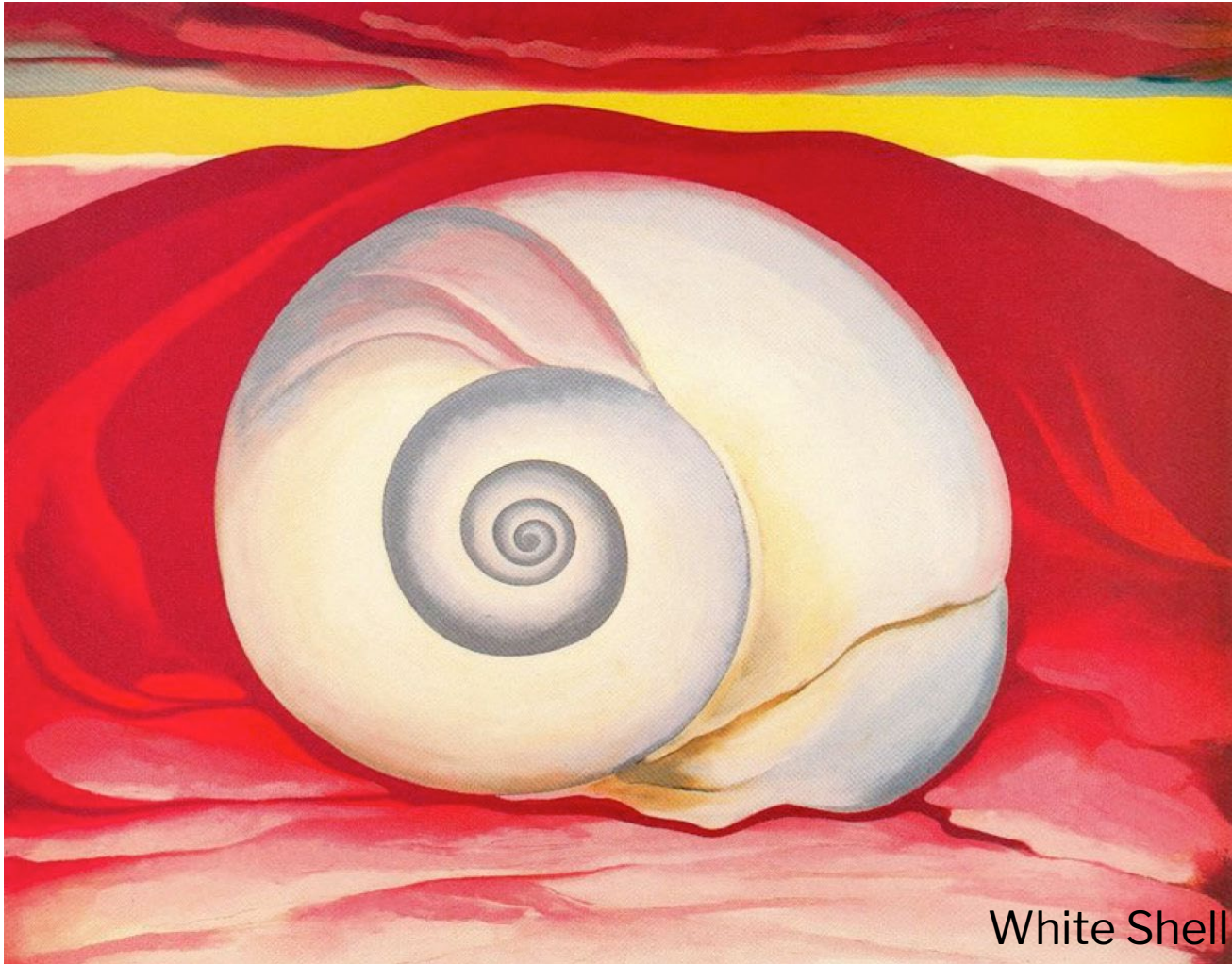
A viewfinder helps an artist focus by looking at something closely and blocking off other details that may be distracting.

Let's take a look at these artworks by Georgia O'Keeffe without a viewfinder first...



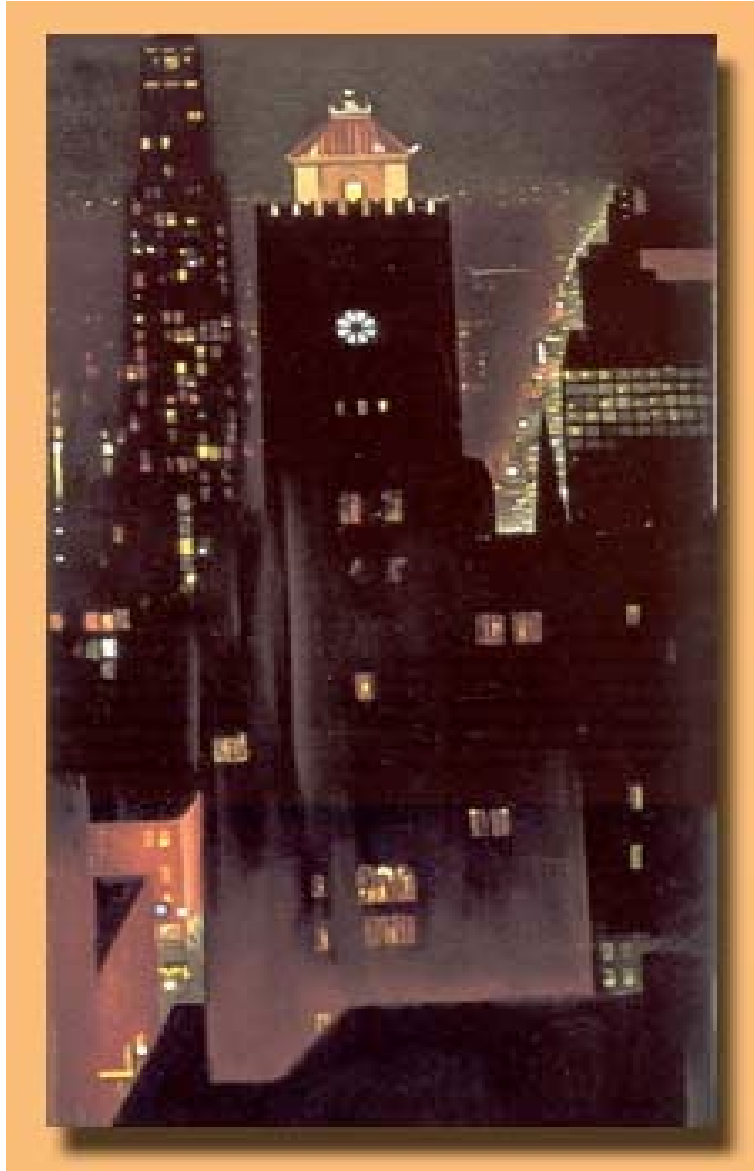
Cow's Skull

Let's take a look at these artworks by Georgia O'Keeffe without a viewfinder first...



White Shell

Let's take a look at these artworks by Georgia O'Keeffe without a viewfinder first...



New York, Night

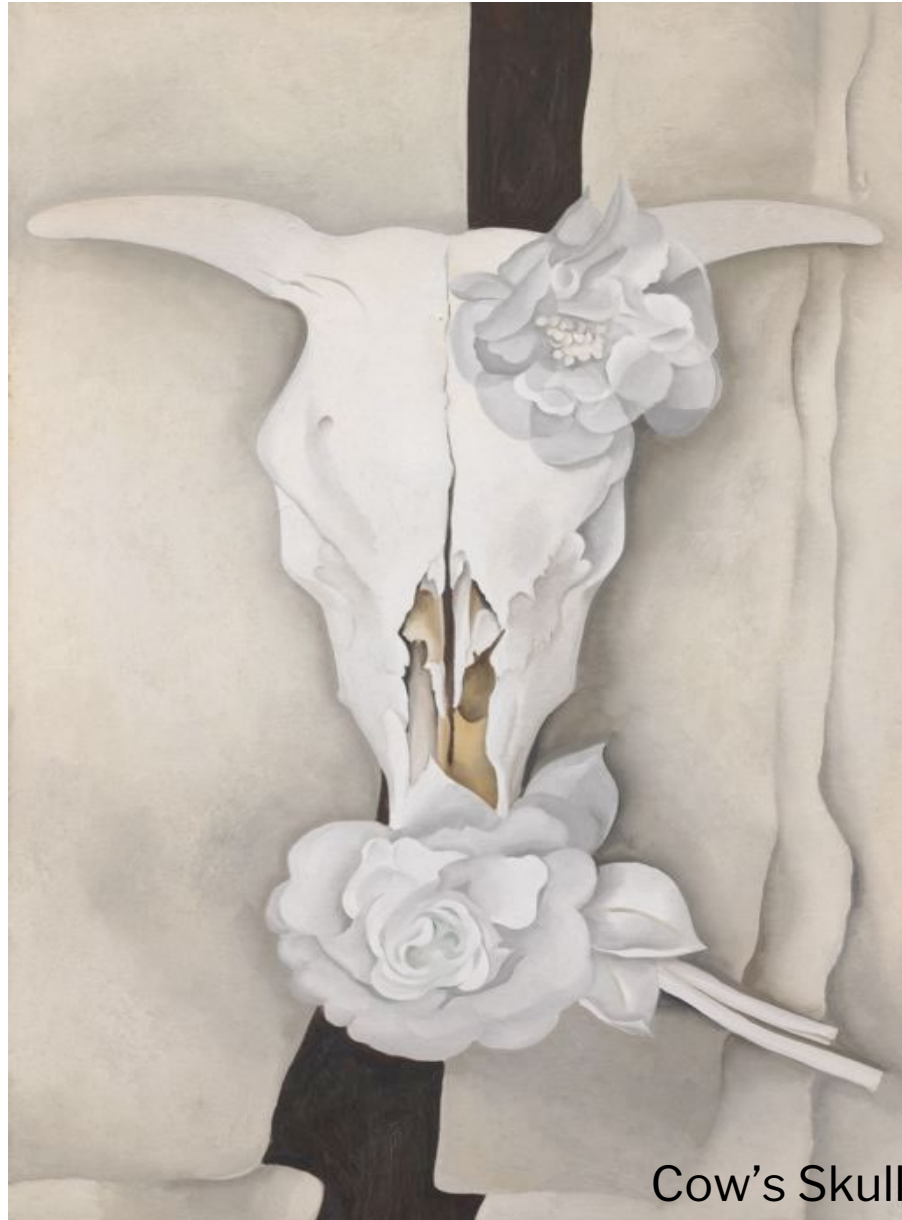
Let's take a look at these artworks by Georgia O'Keeffe without a viewfinder first...



Grey Hills

Now, let's use a viewfinder to look at these again...

How is looking at this through a viewfinder different than looking at it without?



Cow's Skull

Now, let's use a viewfinder to look at these again...

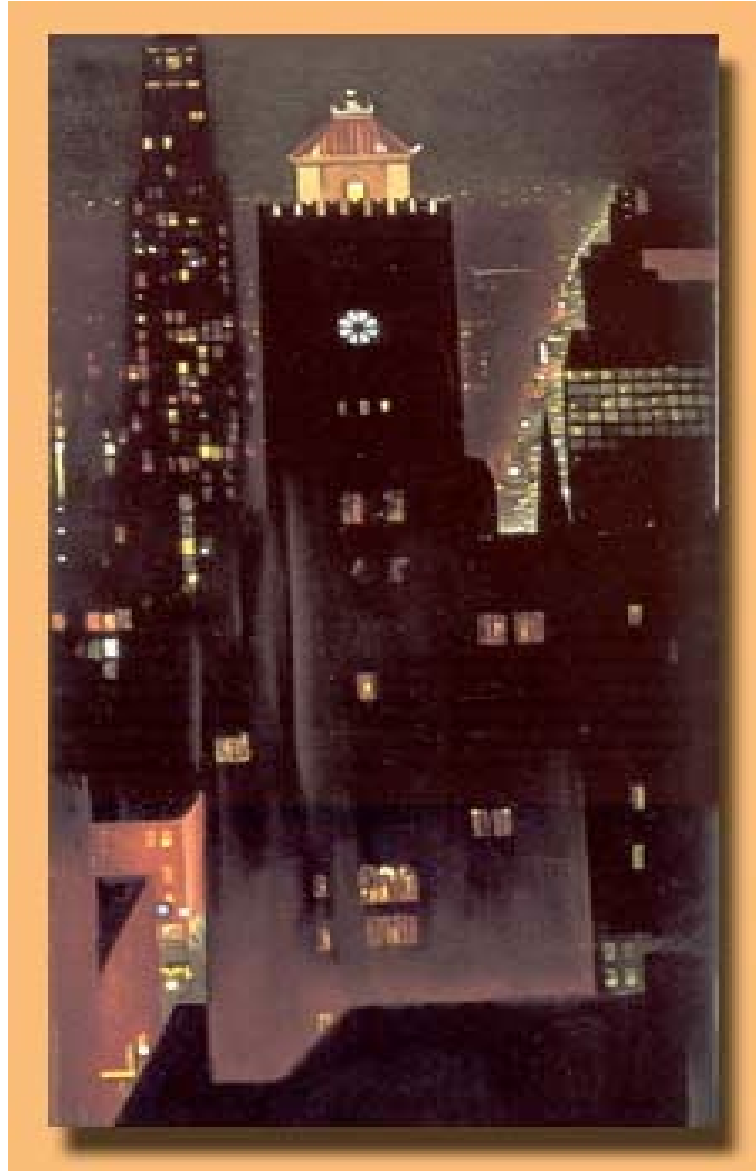
How is looking at this through a viewfinder different than looking at it without?



White Shell

Now, let's use a viewfinder to look at these again...

How is looking at this through a viewfinder different than looking at it without?



New York, Night

Now, let's use a viewfinder to look at these again...

How is looking at this through a viewfinder different than looking at it without?



Grey Hills

Remember:

Who?

Georgia O'Keeffe made modern art and she often made her work by looking at her surroundings closely.



What?

Georgia O'Keeffe **often painted buildings and natural treasures, such as flowers, rocks, bones, feathers, and shells.**

How?

Georgia O'Keeffe often outlined her artwork first and then filled it in with paint.

To do:

Who?

You!

What?

Just like Georgia O'Keeffe you will find inspiration from your surroundings!

We will go outside and choose either a building to paint or a natural treasure, like a tree, rock, grass, clouds, flower, etc.

How?

Just like Georgia O'Keeffe, you will bring your viewfinder to help you zoom in on the details.

Just like Georgia O'Keeffe, you will first outline your creation using pastels and then fill it in using paint.